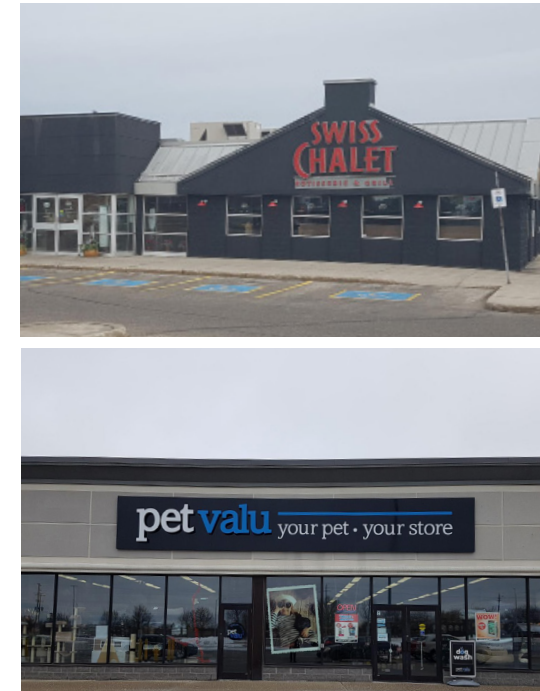


FOR LEASE



2017 Estimates	1 km	3 km	10 km
Population	3,424	15,794	20,128
Projected 2022 Population	3,536	16,370	20,846
Projected Population Growth (2016 - 2022)	3.27%	3.65%	3.57%
Number of Households	1,492	7,161	8,793
Median Age	44.0	48.3	46.9
Average Household Income	\$86,348	\$80,866	\$85,492
Average Person per Household	2.29	2.17	2.26

GLA

88,400 SF Unenclosed Shopping Centre

MAJOR TENANTS



LOCATION AND COMMUNITY

- Tillsonburg is a growing community in Southwestern Ontario, strategically located at the crossroads of Oxford, Elgin, and Norfolk Counties. It is just 25 minutes from Highway 401, and within a two-hour drive of three major border crossings.
- Tillsonburg has a labour and consumer population of 225,000 within a 30 minute drive.

HIGHLIGHTS

Norfolk Mall is a 88,400 sq. ft. outdoor mall located on the outer perimeter of the town of Tillsonburg.

The mall has strong core tenancies which include: Dollarama, Swiss Chalet/Harvey's, Pet Valu and is shadow anchored by a Zehrs grocery store.

It is located in the southeast of town on Hwy 3 that provides easy access for neighbouring counties.



NORFOLK MALL

400 Simcoe Street, Tillsonburg, ON



A1001. Fabricland (11,375 sf)

A1002. Dollarama (9,500 sf)

A1017. PetValu (4,292 sf)

A1029. Available (58,616 sf)

B1001. Swiss Chalet (4,615 sf)